

THE TOPAZ



1. A topaz is a gem-stone. Its name means *-to seek*. This is because it was first found on an island in the R___ S___. The island was often covered with mist, and the s_____ had to seek hard to find it.

2. Our Lord says, *'Seek and ye shall find'*.

3. Today the t_____ is found in different parts of the world—Br____, USA, Ru____, the Middle East and even in Sc_____, where they are called *Cairngorms*.

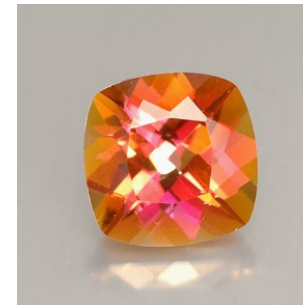
4. They come in various colours—such as gr____, or____ and r___; some are clear like diamonds but most of them are y_____ or yellowy-brown.

5. Some people have connected the topaz with showing sympathy. Because.....

- It is cheering—yellow is the colour of cheerfulness and brightness, the colour of sunshine. A b_____ sunny day makes people feel b_____, and a sympathetic person makes others feel better.
- It is electric—when you rub a t_____, it generates electricity (like a balloon). A sympathetic person has power to do people good.
- It is fragile - it has to be treated with care. Sympathy is a fragile thing, it can only be given with c____re. (Story of the boy who helped the drunkard walk past a public house)

'The topaz of Ethiopia shall not equal it...'

Job 28 v 19



6. Sympathy is not just for those who are feeling gloomy...*'rejoice with them that do rejoice and weep with them*

that weep' (Rom 12 v 15)

7. Our text points to Christ, who is more valuable than the topaz....or pure gold. He is the sympathising Saviour.

